



ANZAC DAY
LEST WE FORGET



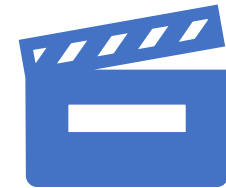
State of Origin Online Challenge

Rules

- Team event- maximum of three players
- Each player must have been born in, or currently reside in, the state/territory they are representing
- Surnames alone are sufficient (unless indicated otherwise)
- Phonetic spelling acceptable (unless indicated otherwise)
- No Googling!!!

Format

- **40 questions, 8 rounds of 5**
- **Two minutes in the breakout room after each round**
- **Once the breakout rooms close, captains have 30 seconds to submit answers (in a single batch)**
- **State's score for each round will be their highest team's score in that round**



Roll Call




2020

ANZAC DAY



LEST WE FORGET



A moment's
silence...

2020

ANZAC DAY



LEST WE FORGET



Thank you




Practice Question
Mics on Mute Please

Q0. (No Points)

What is the capital city of
Slovakia?

The background is a solid orange color. It features several yellow geometric shapes: a large circle in the upper left, a smaller circle in the top right, a square outline on the left, a dashed vertical line in the top left, a dashed diagonal line in the bottom left, and a partial square outline in the top center.

Please enter your
Breakout room



Team captains - please
submit your answer via
private chat

Q0. (No Points)

What is the capital city of Slovakia?

Bratislava



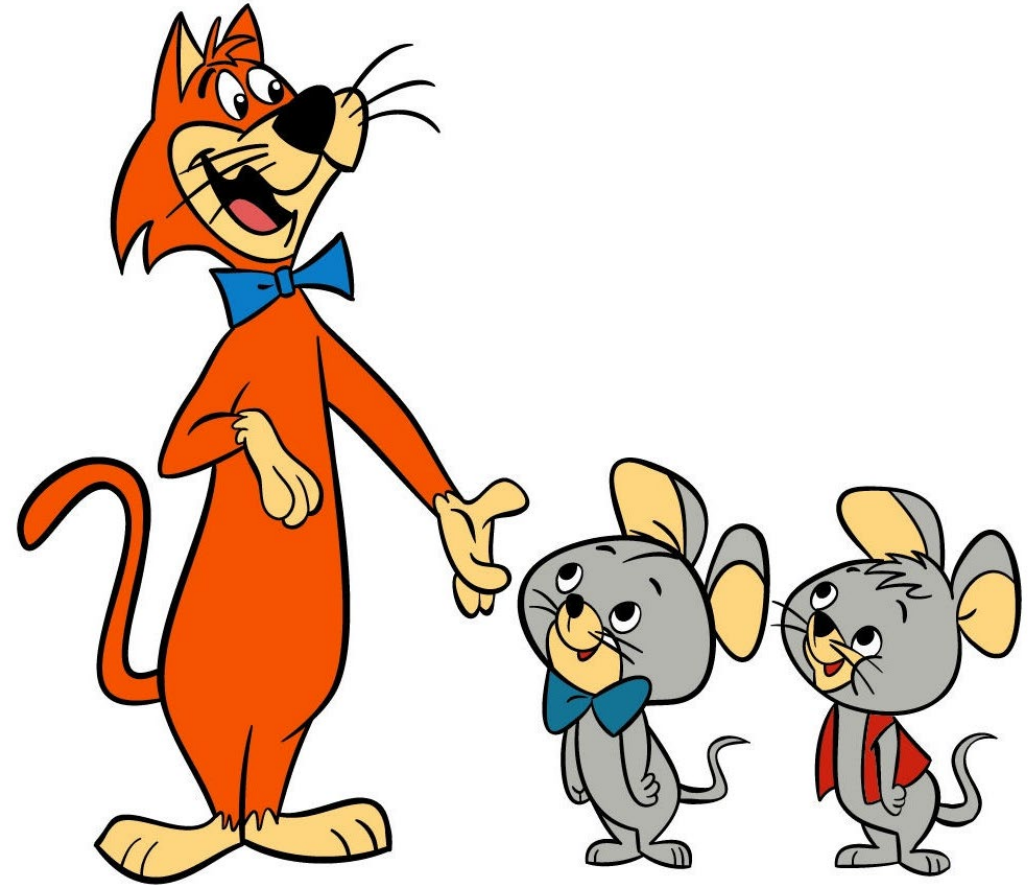
Round 1
Mics on Mute Please

Q1. Along with poppies, which other plant is often worn on ANZAC Day? A symbol of remembrance since ancient times, it has extra significance for ANZACs as it grows wild at Gallipoli?



Q2. Which city is sometimes referred to as “HCMC”?

Q3. A regular segment on the *Huckleberry Hound* TV show featured mice Pixie and Dixie attempting to outsmart which cartoon cat?



SKETCHOK.COM



Q4. which Hungarian-American billionaire and philanthropist (b. 1930) was dubbed "The Man Who Broke the Bank of England" after the 1992 *Black Wednesday* UK currency crisis?

Q5. Emily Van Camp portrayed Emily Thorne on which 2011-2015 American television drama?





Please enter your
Breakout room

Team captains - please submit
your answers via private chat

Round 1 Answers





Rosemary

Q1. Along with poppies, which other plant is often worn on ANZAC Day? A symbol of remembrance since ancient times, it has extra significance for ANZACs as it grows wild at Gallipoli?

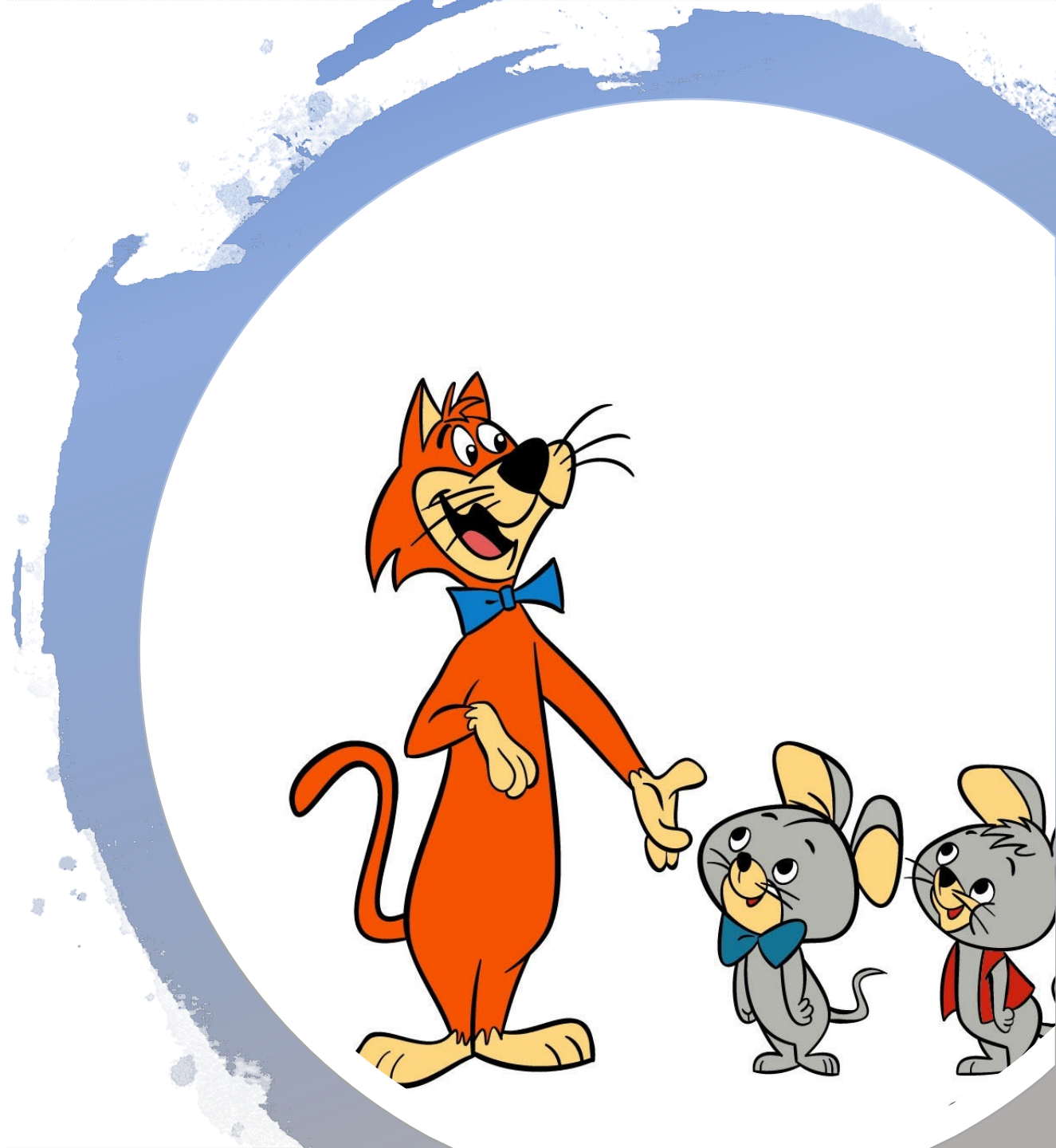


Q2. Which city is sometimes referred to as “HCMC”?

**Saigon /
Ho Chi Minh City**

Q3. A regular segment on the *Huckleberry Hound* TV show featured mice Pixie and Dixie attempting to outsmart which cartoon cat?

Mr Jinx





Q4. Dubbed "The Man Who Broke the Bank of England" after the 1992 Black Wednesday UK currency crisis, which Hungarian-American billionaire investor and philanthropist (b. 1930) is pictured here?

George Soros



Q5. Emily Van Camp portrayed Emily Thorne on which 2011-2015 American television drama?

Revenge



Round 1 Scores



Round 2
Mics on Mute Please

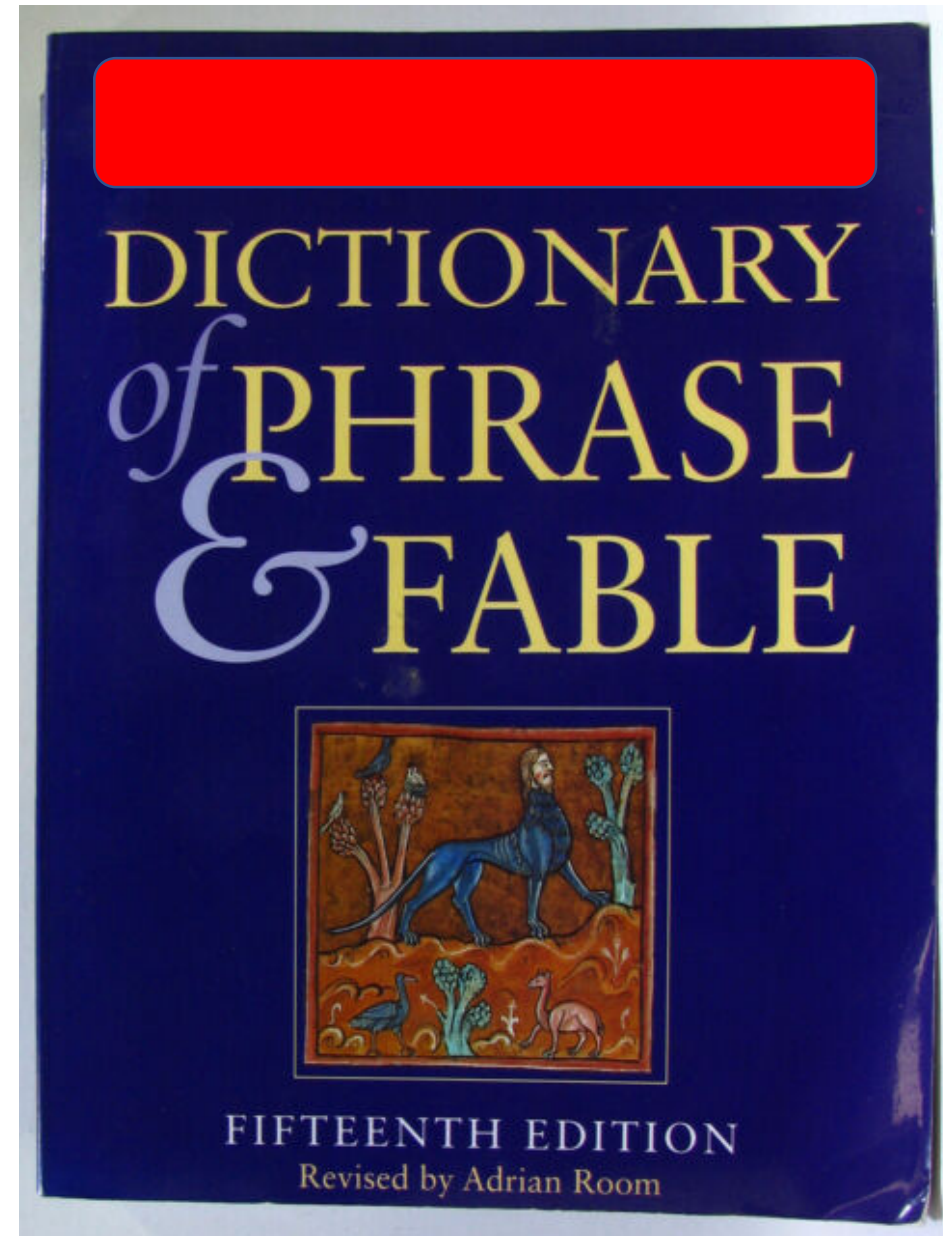
Q6. In 1983, the first commercial wireless telephone call was made on a DynaTAC 8000X manufactured by which company?





Q7. Known for his portrayal of eccentric characters on film and TV, such as Robert California in *The Office*, which American actor (b. 1960) is pictured?

Q8. The 20th
edition of whose
enduring
dictionary of
phrase and fable
was published in
2018?






Q9. The gelatine-based confectionary gummy bears was invented in the 1920s in which European country?

Q10. What device is pictured here?



The background is a solid orange color. It features several yellow geometric shapes: a large circle in the upper left, a smaller circle in the upper right, a square outline on the left, a dashed vertical line on the far left, a dashed diagonal line in the lower left, and a partial square outline at the top center. A large white semi-circle is positioned on the right side of the image, containing the text.

Please enter your
Breakout room



Team captains - please
submit your answers via
private chat

Round 2 Answers





Q6. In 1983, the first commercial wireless telephone call was made on a DynaTAC 8000X manufactured by which company?

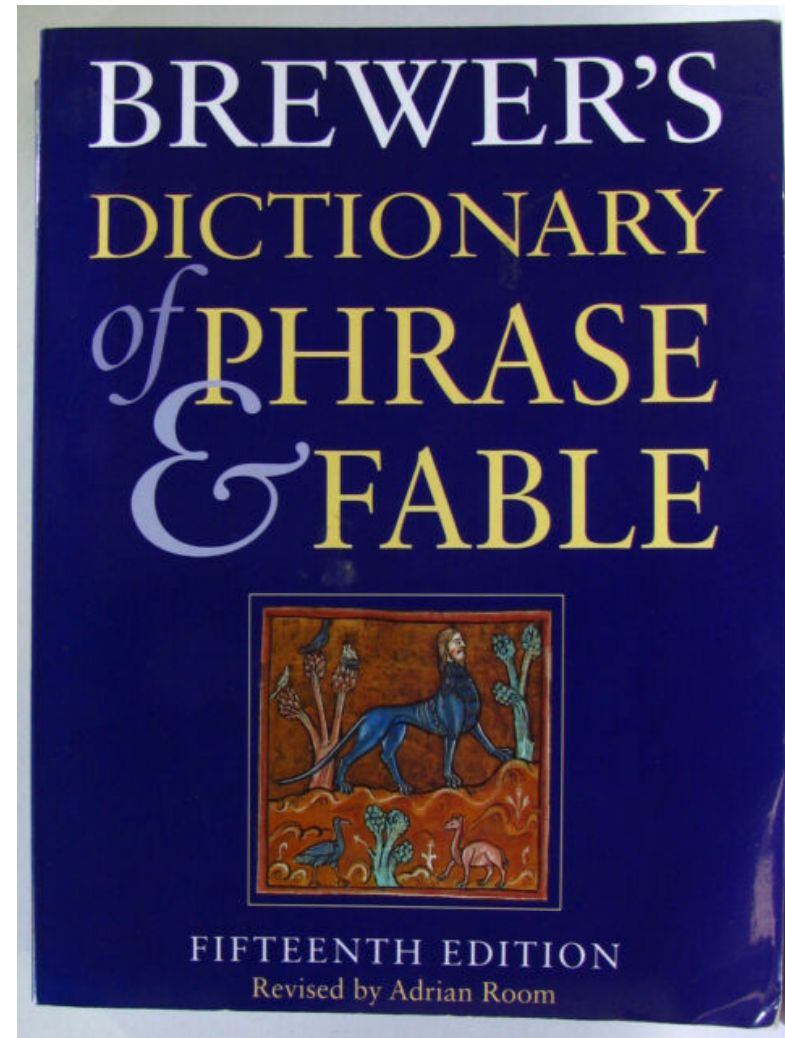
Motorola

Q7. Known for his portrayal of eccentric characters on film and TV, such as Robert California in *The Office*, which American actor (b. 1960) is pictured?

James Spader



Q8. The 20th
edition of whose
enduring
dictionary of
phrase and fable
was published in
2018?



Q9. The gelatine-based confectionary gummy bears was invented in the 1920s in which European country?

Germany





Overlocker

Q10. What device is pictured here?



Round 2 Scores

Overall Scores

Thank you for participating!



ANZAC DAY
LEST WE FORGET

